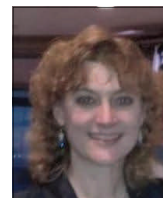


**We are CSAP!**



Molly Thompson, President

**SPONSORS**



**Inside this issue:**

President's Message	1
50/50 Raffle Winner Joint Committee Update CSAP Takes on the ATL New Textbook Announcement	2
SB 304 — Better Hearing and Speech Month Proponent Testimony	3
News From the Washington State Special Education Coalition	4
Online Hearing Testing Update — A Small Victory	5
ASHA Community: A New Way to Stay Connected! ASHA Convention Highlight CSAP Teleseminars	6
American Speech-Language-Hearing Association Recognition and Renewal Affiliate Status A Fond Farewell	7

**UPCOMING MEETINGS**

November 14, 2012: Atlanta, GA  
May 2013: ASHA Headquarters in Rockville, MD

**President's Message**

**C**heers to a successful conference in Anchorage, Alaska! It takes a village- and that is a literal meaning here in Alaska where there are more villages than towns. While there isn't an official "committee" for planning the Conference, the president is not alone in creating these events. A hearty *Quyana* ("thank you" in Central Yup'ik Eskimo) go to Carol Fleming, Paulette Gentry, Judith Keller, Eileen Crowe and Janet Deppe. Their insight and know-how made this meeting really come together. A big thanks to AKSHA and the past presidents for their donations. *Gunalche'esh* ("thank you" in Tlingit Indian) to our western states for their donation items, and to everyone who added extra poundage to their baggage to bring/take home an auction item! I must also give a shout out to my co-workers who always seem to get roped into helping when any one of us volunteers to host a meeting.

CSAPers turned out from all over the country and got to enjoy sunshine for the entire meeting. It clouded up after the gavel went down. The venue was beautiful- with a view that added to the energy. If you want to see the *Sivuqaq* dancers that opened the meeting, there are pictures on Facebook. (Just be aware that their main drummer and singer were not present as they had to help out with a walrus catch on St. Lawrence Island). If you were able to attend, please post your pictures to the CSAP Facebook page. Facebook quickly keeps us up on what is happening all year round with each other as well our various state associations. Communication throughout the year with other leaders is a big part of what makes CSAP unique.

Did I mention that the speakers were fabulous? The biggest part of a state association is the annual meeting. What a delight to learn about meeting planning from the perspective of both the meeting planner and the hotel planner. I had never heard of some of the tools that were mentioned. Ethics is always a concern as we not only need to protect the public from unethical members but train others in what IS ethical behavior.

There are a lot of new topics as our field continues to adapt and change. We heard from experienced leaders on support personnel as well as what is new in federal and state issues. My favorite part is the roundtable discussions. This is where items outside the agenda get discussed. Of course, there were the state bring, brags and moans. All of this is part of the meeting record. As a CSAP member, you will have access to everything from the meeting on the website. We will send an e-mail blast out as soon as everything is posted. We hope to see you in Atlanta this fall so you can add your voice to the discussion. Until then, ask any question on the list-serve. Being in CSAP means you always have "people"!

*Molly*  
Molly Thompson, MS, CCC-SLP  
CSAP President



Editor: Regina Lemmon

## 50/50 Raffle Winner

**W**hat a great time we all had in Alaska! Thanks to everyone for supporting the CSAP 50/50 raffle and live auction in Anchorage. Big congratulations to Monica Scott, Arkansas President, for winning the 2012 Spring CSAP 50/50! She was able to take home more than \$300 and support CSAP at the same time. Additionally, the live auction raised more than \$3,000 to offset conference costs and assist in funding the Nancy McKinley Leadership Award.

A big thank you to EBS for generously sponsoring the social and to all of you for opening your wallets. Remember to buy your 50/50 tickets at our next meeting in Atlanta and don't forget to bring a fabulous item to the auction from your state, so you can potentially go home with a little extra change in your pocket or a fabulous trinket in your suitcase. I look forward to seeing everyone in Atlanta in November!

**Tara M. Gregori, MSP, CCC-SLP, NBCT, BCBA**  
**CSAP Treasurer**



Pictured above are CSAP attendees who have completed service to their associations. Pictured right is Monica Scott, president of ARKSHA with her 50/50 winnings.



## Joint Committee Update

**T**he Joint Committee on State-National Association Relations is a joint ASHA-CSAP committee that works together to ensure the smooth relationships between the organizations. The CSAP members are the President, Past President and President-Elect. The ASHA members are two appointed members who have served as state association presidents in the past - Lissa Power-deFur and Jeff Larsen - and Eileen Crowe of the National Office the the VP of Government Relations and Public I Policy, Theresa Rogers

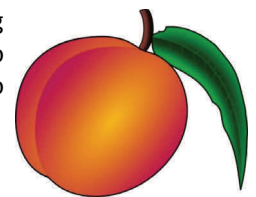
The Joint Committee solicits ideas from the CSAP membership on issues of concern to state associations on the HELP forms. The Committee met on Saturday of the CSAP meeting to review the forms and will continue the discussion via conference call. Each comment is carefully reviewed and follow-up by a member of the Committee or the National Office staff is ensured. Thanks for completing these forms and sharing your ideas this spring!

**Lissa Power-deFur, PhD, CCC-SLP**  
**Joint Committee Representative**



## CSAP Takes on the ATL!

**T**he next CSAP Conference will be held on November 14 in Atlanta, Georgia. CSAP's Executive Board is busy planning a wonderful and exciting Fall Conference to help you manage your state association. So, invite your state association leadership to join us at the upcoming Conference. Feel free to stay over to attend the ASHA convention. It's going to be just "peachy keen!"



**Regina Lemmon, PhD**  
**CSAP Newsletter Editor**

## New Textbook Announcement

**Title:** *The Fundamentals of Speech Communication in the Digital Age*

**Authors:** Regina Williams, PhD  
 Lacy McQuitty, PhD  
 Tracey Snipes, PhD

**Publisher:** Kendall Hunt

**ISBN:** 978-1-4652-0259-8



## SB 304 — Better Hearing and Speech Month Proponent Testimony



**C**hairman Oelslager, Ranking Minority Member Cafaro and members of the Senate Health, Human Services and Aging Committee, thank you for the opportunity to appear before you this afternoon to offer proponent testimony on SB 304 which would memorialize the month of May as “Better Hearing and Speech Month” in Ohio.

My name is Janice M. Wright, I have a Master’s degree in speech-language pathology as well as a Certificate of Clinical Competency from the American Speech-Language-Hearing Association (ASHA). I discovered the field of communication disorders as a high school student in Cleveland and I have been able, since graduating with my Master’s degree from Cleveland State University, to successfully pursue a career that I love for the past 30 years. I am currently a clinical supervisor and instructor in the College of Health Sciences and Professions in the School of of Rehabilitation and Communication Sciences, Division of Communication Sciences and Disorders at Ohio University. I have been teaching at Ohio University for 14 years after working in Cuyahoga County for a number of years. Ohio University has a premiere undergraduate and graduate program in Communication Sciences and Disorders. I am here today representing the Ohio Speech-Language-Hearing Association, of which I am currently president. OSLHA is an organization that has served communication sciences disorders professionals , students and consumers for the past 66 years. We currently have a membership of 2,000 plus members. Our membership consists of speech-language pathologists, audiologists, related professionals and both graduate and undergraduate students majoring in Communication Sciences and Disorders.

Since 1927, ASHA has celebrated Better Hearing and Speech Month each May to raise public awareness of the speech language and hearing disorders that affect 14 million Americans. The ability to communicate basic wants and needs is an ability that we often take for granted. Speech, language and hearing disorders can take many forms and can limit academic achievement, social adjustment and career advancement. An individual may be born with a speech language or hearing disorder or it may be caused by accidents, injuries or illness. Fortunately most people with speech, language and hearing problems can be helped. Even if the problems cannot be eliminated we can teach individuals with speech language and hearing problems strategies to help them cope with their disability. Individuals may not fully regain their capacity to speak, hear and understand but a speech language

pathologist and/or audiologist can help these individuals live more independently. There is nothing more gratifying then seeing the eyes of a mother and her child light up when the child says Ma-Ma for the first time at the age of 4 or the satisfaction that an adult with aphasia feels when they are able to order their own dinner at a restaurant after losing the ability to speak because of a stroke. These precious moments are due to the diligent work that speech language pathologists and audiologists perform working in a variety of settings from the schools, to hospitals, to rehabilitation centers, to university and private clinics, to Head start programs as well as nursing homes, VA clinics, health care agencies and facilities for persons with multiple handicaps across the state. Speech-language pathologists and audiologists truly serve individuals across the lifespan. The Ohio Speech -Language and Hearing Association feels that it is important to pass S.B. 304 as a month dedicated to raising awareness about communication disorders and to promoting treatment that can improve the quality of life for those who experience problems with speaking, understanding or hearing.

Chairman Oelslager, Ranking Minority Member Cafaro and members of the Senate Health, Human Services and Aging Committee, we appreciate Senator Balderson’s leadership in sponsoring this legislation. I hope that this committee and the full Senate will vote to support passage of S.B. 304 for the reasons that I’ve outlined in my testimony today. Thank you again for the opportunity to appear before you this afternoon. I would be happy to answer any questions that you might have.



Pictured From left to right: Gregg Thornton, Executive Director of the Ohio Board of Speech-Language and Hearing; Janice M. Wright, President of the OSLHA, Senator Troy Balderson; Dawn Gleason, President of OHSC

## News From the Washington State Special Education Coalition



**W**SSEC brought about one hundred parents, educators and other professionals together on April 28, 2012 for a DAY OF CONVERSATION “to bring people together and lay the foundation for

the preservation of Special Education in the State of Washington.” The all-day event was held at WEA headquarters in Federal Way and facilitated by Kenneth Jones, PhD. Attendees were asked to create a “preferred future” for special education and to describe ways to get there. Attendees were challenged to think where we want special education to be in five years.

### FUNDING:

Funding of special education was briefly explained. Pat Steinburg of WSSEC, reminded us that WSSEC supports all efforts to fully fund basic education, which is the paramount duty of the state, as the state court recently declared. Any funding increase to basic education increases the size of the pot for all. Students on IEPs bring in basic education dollars first. We need to fight for basic education funding. In the late '90s, our state was 10th in the nation for funding basic education. Now we're 48th. It was suggested that we closely watch Tim Eyman's initiative.

How much of a student's basic education dollars go into the special education budget? It used to be 45%, went down to 7% and now is up to 28%.

### MY SLP SURPRISE:

We were “mixed” at tables, so that we could learn from varied viewpoints. I certainly got my eyes opened! READ ON:

I sat beside a Master's Level Social Worker (MSW) from Seattle who had recently relocated with her spouse from Michigan. She said she naively expected to be hired by a school district to provide special education IEP services for students with behavioral/mental health issues, executive function deficits, and social interaction deficits. Evidently, MSWs in Michigan are very involved with services to students with Emotional Impairments. She said there are more MSWs in Michigan than SLPs. I asked what SLPs in the schools do. She said that SLPs only serve students with articulation, language, fluency and voice deficits, more of the technical aspects of communication. In Michigan, it would be the MSW creating “friendship groups” and providing Social Thinking curriculum as per Michele Garcia Winner. The MSW would be working with the students with Asperger Syndrome. This was fascinating because I had just met with parents of a teen with Learning Disability/Intellectually Disability who was transferring from the Midwest. The mother asked where the Social Worker was. I told her that the special education teacher and/or I would cover social interaction IEP needs.

Back at the WSSEC conference, the MSW said she was working in a school district implementing Bullying Prevention programs in the general education program and for the Safety and Security department. She said she hopes to investigate the credentialing of MSWs in special education in Washington State. She said that MSWs are needed in special education and had convincing reasons. It was not so difficult for me to provide Executive Function therapy for severe TBI students just out of hospital rehabilitation. However, now as Executive Function intervention is filtering down from hospital rehab with TBI and stroke to ADHD, Asperger's, Learning Disabilities and even general education, who will get the training and who will provide the services? Fascinating considerations. There're no right or wrong answers. The MSW said that Social Workers need to have a stronger presence in Washington State.

It was interesting to listen and learn about MSWs providing services for what many of us have come to think of as the purview of the SLP. I wonder if special education teachers consider it an intrusion when some SLPs work with children in reading and/or written language. I have heard varied comments from SLPs when OTs manage feeding issues in the schools. Crossover and trans disciplinary issues come in to play in many cases. All I learned started me considering how we SLPs seem to have spread ourselves thin, serving assorted communication issues. It was interesting to learn and consider a divergent service delivery point of view from another state.

I also sat at the table with parents of students on special education IEPs for academic learning and for communication. Both were positive about SLP services. Both parents seemed as if they would be pleasant to work with, but strong advocates for their children. It was a unique experience to sit at the table to discuss special education without dealing with immediate advocacy issues.

### THE VISION STATEMENTS:

The following were vision statements developed at the conference.

**Behavioral Supports** – All students receive appropriate positive supports that enhances their social/emotional behavior/development. Adequate staff training was a key element.

**Federal Mandates** – All federal mandates regarding identification and assessment will engage the disability community in the planning and implementation process. Full funding of IDEA was a key element.

**Professional Development** – All stakeholders receive appropriate, high quality, evidence based professional development and resources. Training of both special and general education staff was a key element.

## News From the Washington State Special Education Coalition *(continued from page 4)*

Access to General Education – Every child is ‘flexibly’ instructed in the environment which best meets their needs. All students are welcomed by typically developing peers. Students with disabilities are involved in their own growth! All teachers teach all kids and are supported with resources of both students’ and staff needs. All players keep an open mind of the child’s ability and potential.

Family Involvement – Families and school staff engage in routine communication that fosters greater collaboration and the celebration of students. Family support plans and access to curricula by parents were elements.

An education system that ensures each individual student reaches his maximum potential. It was suggested that families and students should decide their vocation, not the system.

Assessment (state testing & eligibility) – A well-established system to assess and identify all students with disabilities in every school district in WA supported by adequately trained staff and budget. Developmentally appropriate testing was an element.

Provision of Related Services – Students benefit from enhanced, integrated related services based on their individual needs.

Civil Rights - Students with disabilities are valued for how and what they learn, not their economic or cognitive potential. The education system operates under a universal system of design that promotes equity and access for all students as contributing citizens. Student with disabilities are educated using values of self-determination and allowed the dignity of risk. Fair and equitable access to programs and services was an element.

**Mary Ellen Talley**  
**WSHLA Liaison to WSSEC**

## Online Hearing Testing Update— A Small Victory

**H**iHealthInnovations, a division of United Healthcare responsible for the online hearing test and distribution of hearing aids to UHC Medicare Part C beneficiaries, removed the availability of their online hearing test in April 2012. While this may be a temporary measure it is a direct result of the efforts of the members of GAC to stop this practice in the state of Ohio. Janice Wright was able to provide a contact at the FDA, her sister, Dr. V. M. Chenault. Dr. Chenault was able to provide Erin Miller, AuD, University of Akron- NOAC with the name and contact information of Dr. Eric Mann at the FDA. Dr. Mann during a conversation with Dr. Miller commented that he was not aware that the “online” hearing test marked by HiHealthInnovations had received marketing clearance and approval from the FDA. Subsequently a letter to Dr. Tseng, the Chief Medical Officer for HiHealthInnovations was written by the FDA Director of the Office of Compliance Center for Devices and Radiological Health directing the company to stop the use of the online hearing testing until they had received approval from the FDA.

Once again this cease and desist order from the FDA is temporary but will buy the time needed to obtain positive results with the piece of legislation that is being proposed in the House of Representatives. Rex Damschroder, 81<sup>st</sup> House District is planning to introduce legislation that will ensure that Ohio licensed professionals are responsible for selecting and fitting hearing aids for Ohio consumers. The bill will address the issue of the ever growing marketplace of internet hearing aid sellers (companies not based in Ohio) that sell these medical devices to Ohioans without having any direct contact with the consumer. Ohio would join nine other states in passing legislation to protect the consumer from such dangerous practices.

**Janice Wright**  
**OSHLA President**



## ASHA Community: A New Way to Stay Connected!



AMERICAN  
SPEECH-LANGUAGE-  
HEARING  
ASSOCIATION

**ASHA**community

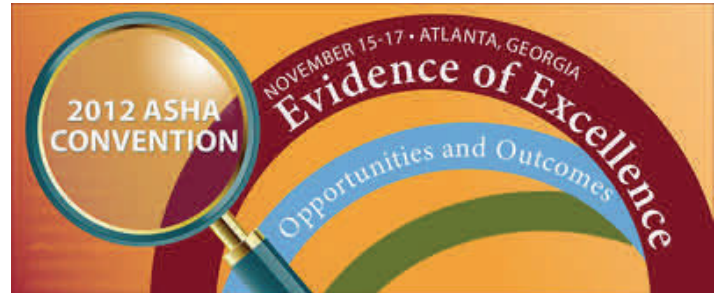
**M**y Space, Facebook, LinkedIn and now *ASHA Community!* That's right, ASHA has a new online community for audiologists and speech-language pathologists to stay connected. This professional mode of communication is known as *ASHA Community*. ASHA community has an email system and the ability for groups to share ideas in a similar manner to threads on BlackBoard. It has been a wonderful experience using it with the SLP Advisory Board. *ASHA Community* can connect you with audiologists and speech-language pathologists from graduate school, state associations, previous work settings as well as ASHA Special Interest Groups (SIGs).

Prior to using *ASHA Community*, you should complete your profile (city, college/university, employment setting, etc.) and upload a picture in pdf format. ASHA has made the website very easy and user friendly to navigate for the novice technology users as well as techies too! It's an exciting way for communication specialists to interact with each other. I challenge each of you to try the new *ASHA Community*. Send me a friend request...I look forward to typing with you soon on *ASHA Community!*

[http://community.asha.org/Home/?utm\\_source=asha&utm\\_medium=email&utm\\_campaign=occommunity061412](http://community.asha.org/Home/?utm_source=asha&utm_medium=email&utm_campaign=occommunity061412)

**Regina Lemmon, PhD**  
CSAP Newsletter Editor

## ASHA Convention Highlight



### **Big News — Special Guests Announced**

You won't want to miss the **Opening General Session** and the Awards Ceremony this year at the ASHA Convention. We are pleased to announce that **Dr. Maya Angelou** will be joining us on Thursday, November 15, for the Opening General Session. Even more exciting, the recipients of the popular Annie Glenn Award at the ASHA Awards Ceremony on Friday, November 16, will be **Congresswoman Gabrielle Giffords** and Captain Mark Kelly. Learn more about the energizing Opening General Session and inspiring Awards Ceremony at [asha.org](http://asha.org).

### **News**

#### **Don't Forget - Registration and Hotel Reservations Open August 1**

Mark your calendar to register early for the ASHA Convention – beginning August 1, you'll be able to register for the Convention and reserve a hotel room in our official ASHA hotel block in one seamless online process. You'll receive the biggest discount on registration rates if you register during the Early Bird rate period. The roommate forum is available now to help ASHA members connect with others who would like to share a hotel room. Go to [asha.org](http://asha.org)

#### **ASHFoundation Amazing Atlanta Raffle**

Win a VIP experience at the 2012 ASHA Convention in Atlanta. One grand prize, valued at \$2,500, includes ASHA Convention registration, a hotel suite, dinner for two, and much more. Proceeds support the ASHF's grants and scholarships programs. Call 301-296-8704 to purchase your ticket—\$10 each or three for \$25.

## CSAP Teleseminars

### **Leadership: Adjusting the Sails**

Presented by: Melaine W. Hudson, MA, CCC-SLP

#### **Replay Teleseminar — Cost \$20**

**For the aspiring and seasoned leader alike!**

- What are the basic qualities of an effective leader?
- How to deal with difficult situations that confront leaders.
- Stories and examples to inspire and motivate.

**Registration is available online at [csap.org](http://csap.org)**

### **Thinking Outside the Box: On-line Solutions for Your Association**

Presented by Michael Shollenberger, founder of AuthWire

#### **Replay Teleseminar — Cost \$20**

**Topics include:**

- Website management/donations
- Online voting
- Online membership dues processing
- Conferences/Seminars - signups and payment
- Continuing education/online courses

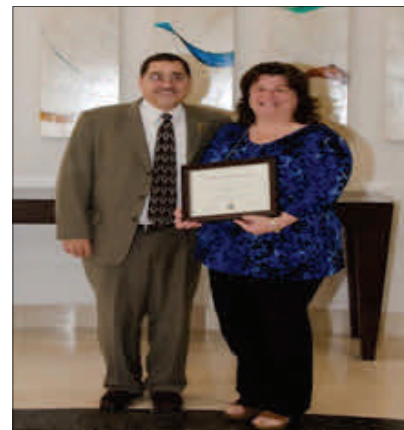
## American Speech-Language-Hearing Association Recognition and Renewal Affiliate Status

**O**n November 16, 2011, during the Fall Council of State Speech-Language-Hearing Association Presidents (CSAP) meeting, North Carolina Speech Hearing and Language Association President Kathy Cox received NCSHLA’s recognition and renewal of affiliate status from the current President of ASHA, Paul Rao. Having affiliate status with ASHA reflects a collaborative agreement between NCSHLA and ASHA that encompasses deep review of NCSHLA’s Bylaws and Code of Ethics to ensure our purposes are consistent with ASHA. Our membership policies must be consistent with ASHA and the acknowledgment of being an independent and autonomous organization must be evident. The association must have a non-discrimination statement consistent with current ASHA standards: “The cornerstones of this relationship are mutual respect, interdependence, and shared responsibilities in promoting and advocating for the collective interests of the professions for audiology, speech-language pathology, and speech, language and hearing research, their members, and consumers of their services.”

The process of renewing NCSHLA’s affiliate status with ASHA began in July of 2010. Affiliate status is reviewed every five years and NCSHLA’s current recognition will be held from January 2012 to December 31, 2016. During the review process, a couple of changes were requested by ASHA to update our statement related to nondiscrimination. Based on NCSHLA Board approval on November 13, 2010, the following language was added to become consistent with ASHA’s new language for non-discrimination: “The Association shall not discriminate on the basis of race, national origin, religion, age, sex, sexual orientation, handicapping condition, gender, or gender identification...” ASHA also recommended adding language to the Code of Ethics that included, “Individuals must not discriminate in the delivery of professional services on any basis including race, sex, religion, national origin, age, gender, gender identification, sexual orientation, or handicapping condition.” With the advent of the new ASHA Code of Ethics 2010, NCSHLA’s language now parallels ASHA’s Code of Ethics. Highlights of some of the benefits of being a recognized ASHA affiliate provide for the following:

- Technical assistance in advocating for state legislative and regulatory change
- Technical support for creating and operating state Political Action Committees
- Eligibility for participation in national-state association networks, such as State Medicare Administrative Contractors (SMAC), State Education Advocacy Leaders (SEAL), and State Advocates for Reimbursement (STAR)
- Information and technical assistance from ASHA continuing education staff on programming, marketing, and evaluating state association-sponsored continuing education opportunities
- Information on state trends in licensure, health, and education policy

**Linda Wortman Lowe**  
NCSHLA Immediate Past President



### A Fond Farewell to Liz ... Adios, Adeus, Shalom, Au Revoir!

**L**iz Thomas, a cheerful organizer at all our meetings and an invaluable resource to our Board these past two years, has left Craven Management. She moves on to new adventures, including her marriage this summer. She will be missed but a great asset to whomever she works with in the future.

**Molly Thompson**  
CSAP President

## CSAP EXECUTIVE BOARD AND COMMITTEES 2012

### PRESIDENT

*Molly Thompson (AK)*  
[polarspeech@yahoo.com](mailto:polarspeech@yahoo.com)

### PRESIDENT-ELECT

*Paulette Gentry (TN)*  
[paulette.gentry@mnps.org](mailto:paulette.gentry@mnps.org)

### PAST PRESIDENT

*Carol Fleming (AR)*  
[cbflem@swbell.net](mailto:cbflem@swbell.net)

### SECRETARY

*Dawn Merth Johnson (WI)*  
[rivcoach.johnson@gmail.com](mailto:rivcoach.johnson@gmail.com)

### TREASURER

*Tara Gregori (SC)*  
[taragregori@bellsouth.net](mailto:taragregori@bellsouth.net)

### MANAGEMENT OFFICE

*Craven Management Associates, LLC*  
Melissa Joseph, Account Manager  
Robert Craven, Business Manager  
700 McKnight Park Drive, Suite 708  
Pittsburgh, PA 15237  
412-366-1177  
412-366-8804 (fax)

### COMMISSIONER ON ISSUES AND PLANNING

COMMISSIONER ON COMMUNICATION AND TECHNOLOGY  
*Rachel Williams (FL)*  
[rachwill@hova.edu](mailto:rachwill@hova.edu)

### TECHNOLOGY COMMITTEE

*Regina Lemmon (SC)*  
[lemmonly@gmail.com](mailto:lemmonly@gmail.com)

### E-NEWSLETTER

*Regina Lemmon (Editor)*  
[lemmonly@gmail.com](mailto:lemmonly@gmail.com)

### TIME AND PLACE COMMITTEE

*Susan Benson (Chair), (OK)*  
[susan-gilmore@ouhsc.edu](mailto:susan-gilmore@ouhsc.edu)

*Tracy Grammer, (OK)*

[tgrammerslp@yahoo.com](mailto:tgrammerslp@yahoo.com)

### NOMINATIONS COMMITTEE

*Amber Heape (Chair), (SC)*  
[aheape1979@gmail.com](mailto:aheape1979@gmail.com)

*Yolanda Miller, (HI)*  
[ymiller@hsha.org](mailto:ymiller@hsha.org)

### LOCAL ARRANGEMENTS SPRING 2012

*Anchorage, AK*  
*Molly Thompson*  
[polarspeech@yahoo.com](mailto:polarspeech@yahoo.com)

### The Mission of CSAP is to:

- 1. provide leadership training for state Speech-Language-Hearing association presidents.**
- 2. be a forum for collaboration and networking among these leaders.**
- 3. promote communication of professional matters between state Speech Language Hearing associations, ASHA and other related national professional organizations.**

### CSAP Vision

**CSAP is the premier organization where state leaders meet to cultivate a unique culture of growth and knowledge through collaborative efforts.**

**CSAP is a related association of the**  
**American Speech-Language Hearing Association**